

# W- 6PLR Portable Low-Rise Lift

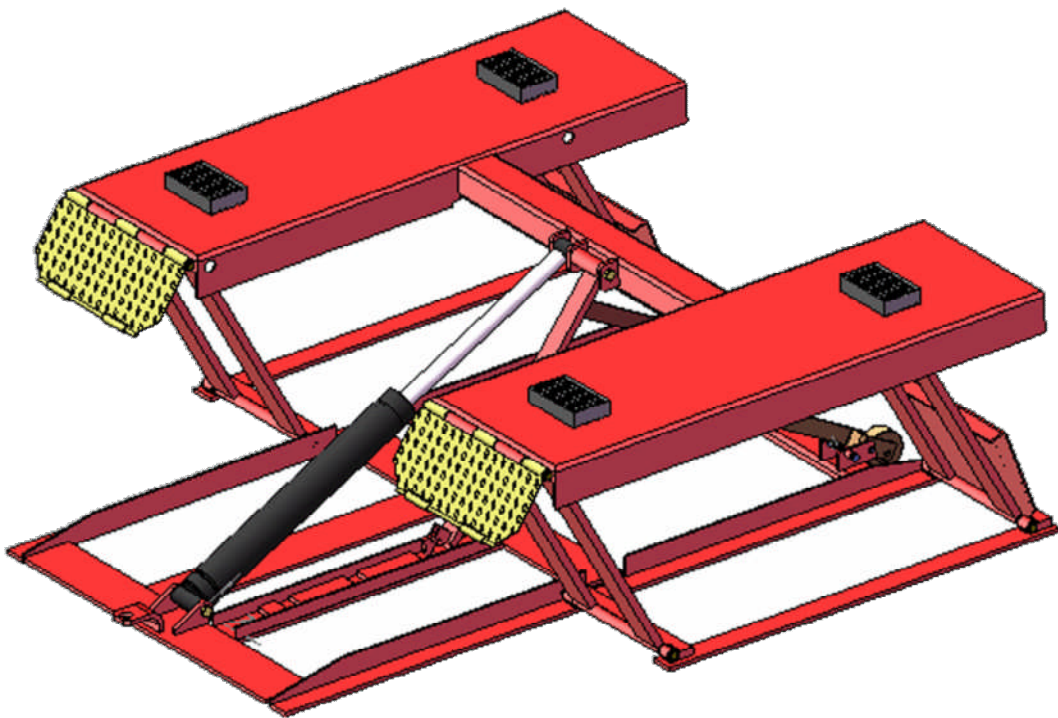


**WEAVER**  
E Q U I P M E N T

Please read this manual before operation



**W-6PLR**  
**6000 lb. Capacity Low Rise Lift**



**Derek Weaver Company**  
2944 SE Loop 820  
Fort Worth, TX 76140  
817-560-9510  
[www.derekweaver.com](http://www.derekweaver.com)

**CONTENTS**

Product Features and Specifications ..... 1

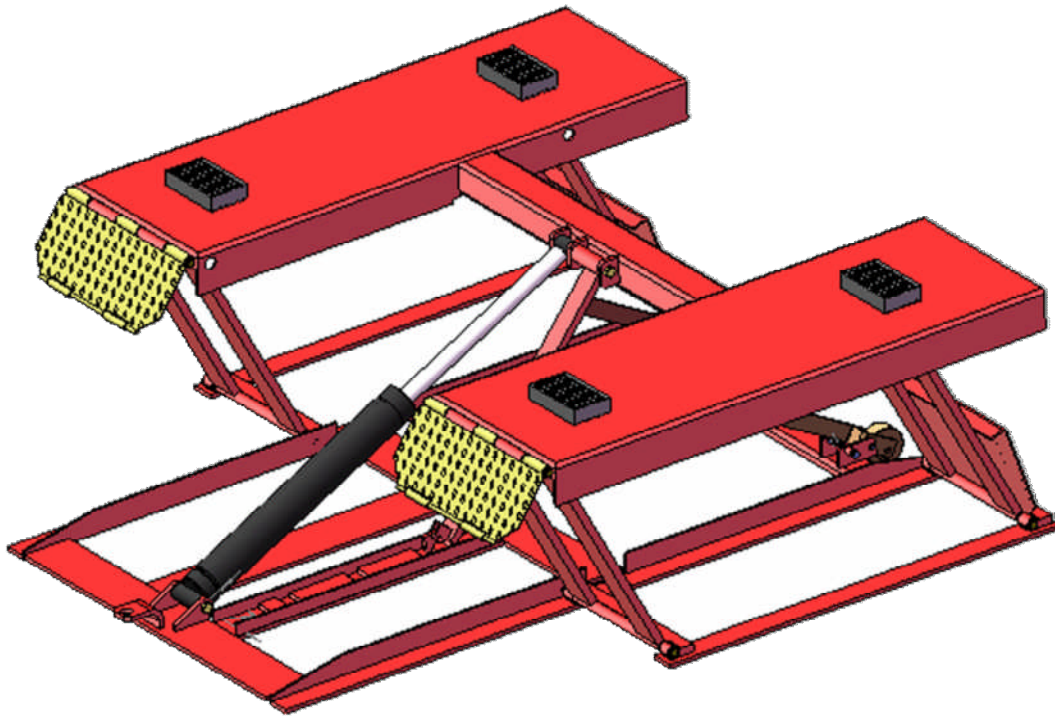
Installation Requirement ..... 2

Exploded View ..... 4

Parts List ..... 6

## I . PRODUCT FEATURES AND SPECIFICATIONS (See Fig.1)

- Automatic safety lock :3 position safety lock .
- Automatic safety lock release.
- Portable unit is easy to move with the power unit stand .
- High speed: From 0-600 mm (23-5/8") in just 30 seconds.
- Standard rubber pads included.



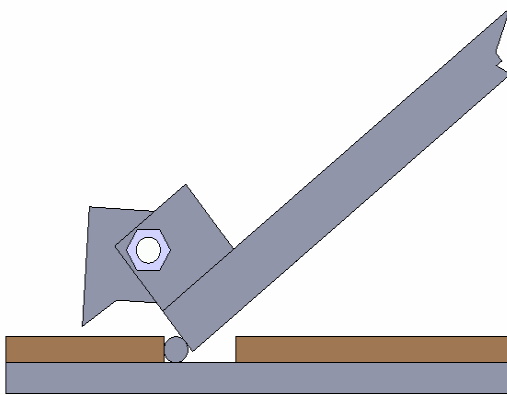
**Fig.1**

## SPECIFICATIONS

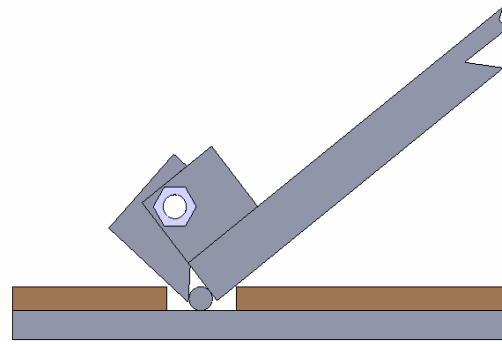
Model	Lifting Capacity	Lifting Time	Overall Raised Height	Lowered Height	Overall Width	Overall Length	Platform Width	Space Between Platform	Gross Weight	Motor
LR06	2.8 T 6,000 lbs	30S	600 mm 23-5/8"	100 mm 4"	1780 mm 70"	1938 mm 76-1/4"	456 mm 18"	868 mm 34-1/8"	350 Kg 770 lbs	2HP 220V/110V 50 / 60Hz 1Phase

## □. INSTALLATION REQUIREMENT

- A. Install the oil hose between oil cylinder and power unit , and then connect the power wire well . The machine can be ready to use.
- B. The roller assy. must be disengage when lifting vehicle (**See Fig. 4**), please make sure the vehicle center of gravity must be in the middle of lift, and the safety lock must be in engaged when lifting. (**See Fig. 2**)

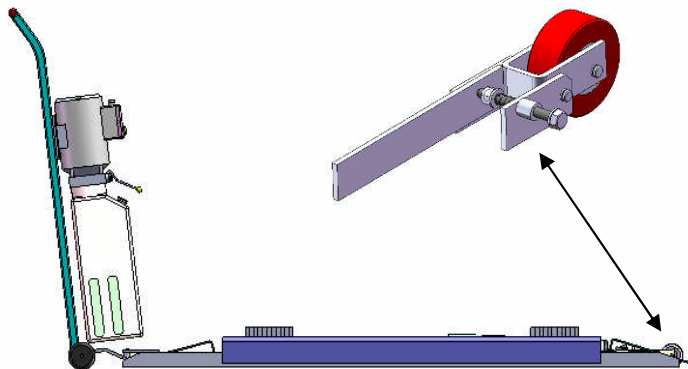


**Fig. 2**



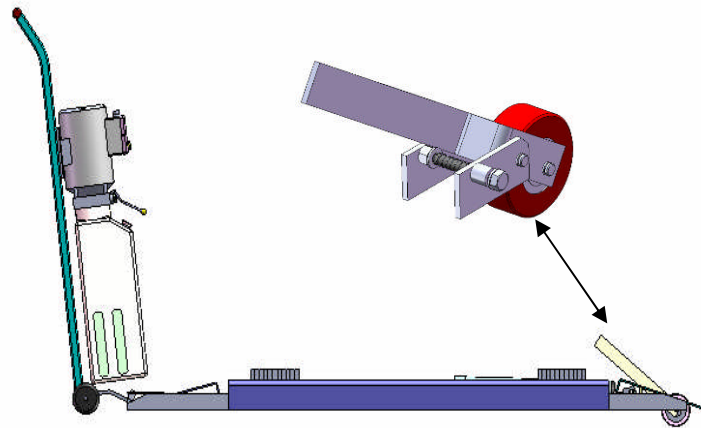
**Fig. 3**

- C. To lower lift: Press the button UP, until the safety lock is in the released position (**See Fig.3** ), lower lift by pushing lowering handle.



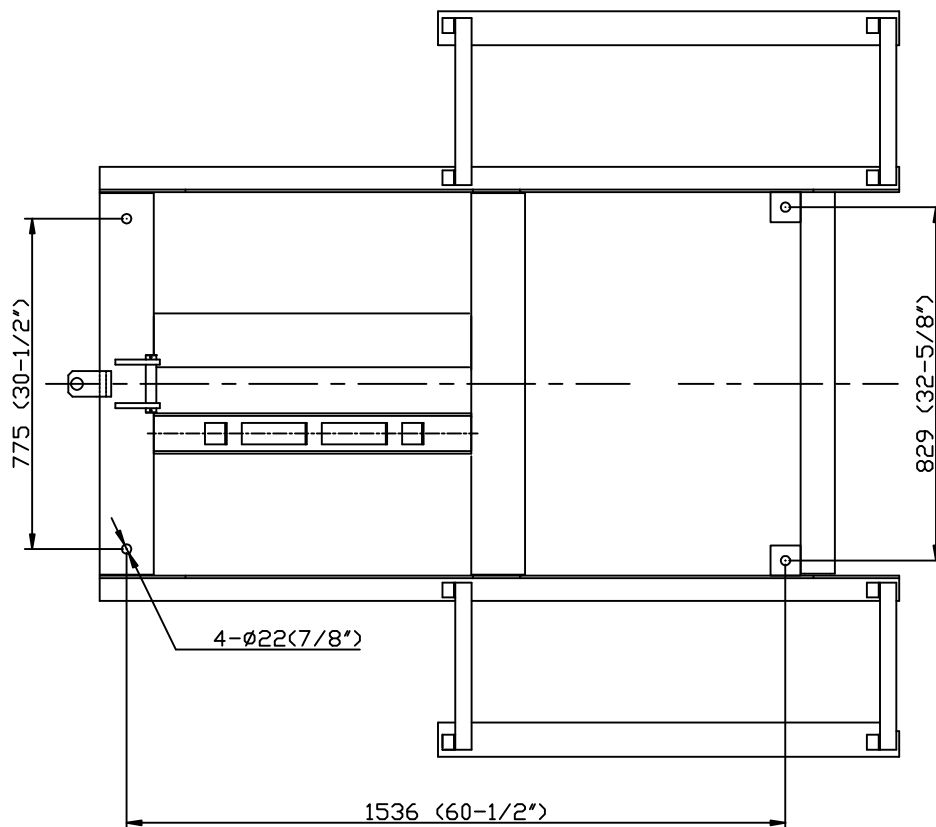
**Fig.4**

- D. Move lift: Lifting are end of the machine by the two sets of roller assy. (See Fig. 5)  
Moving the lift by the power unit stand.



**Fig. 5**

- E. This machine is with 4 holes, it can be fixed on the floor by using 3/4\*4-3/4 anchor bolts. (See Fig. 6)



**Fig. 6**



III. EXPLODED VIEW

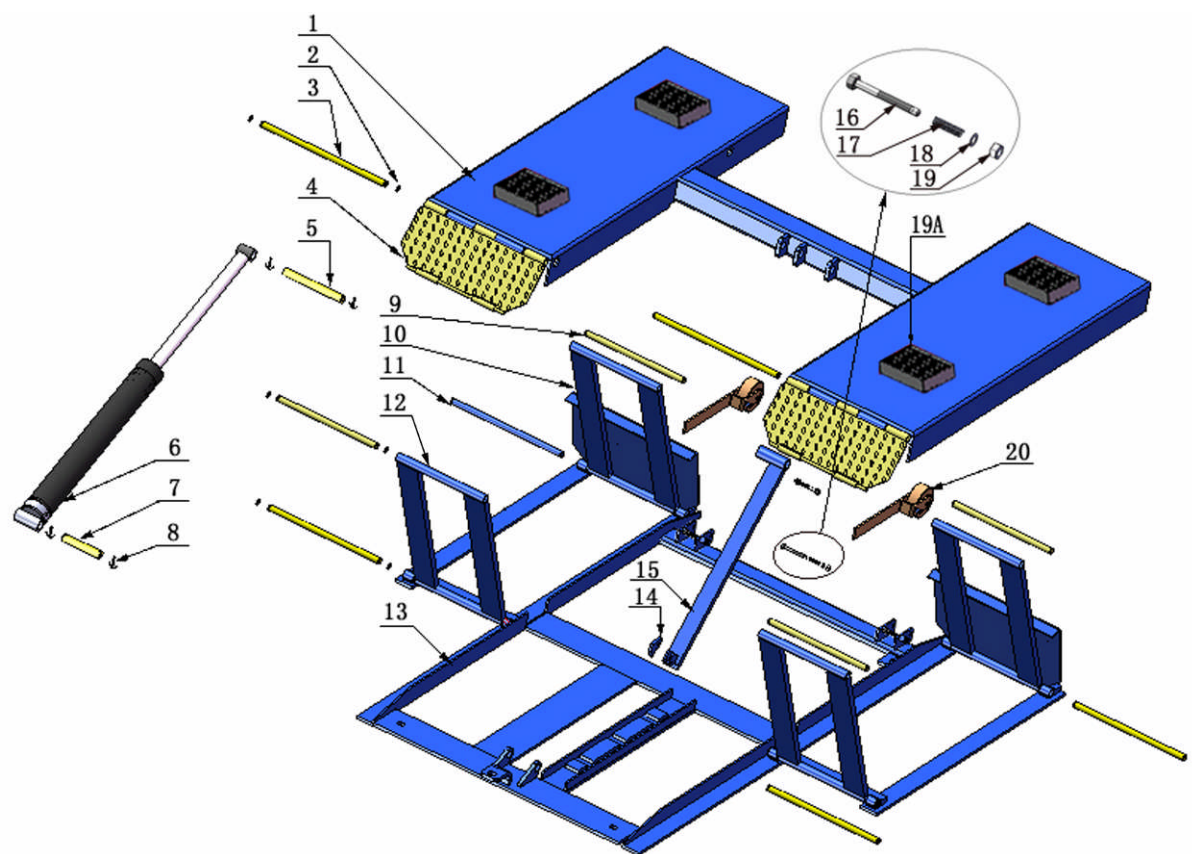


Fig. 7

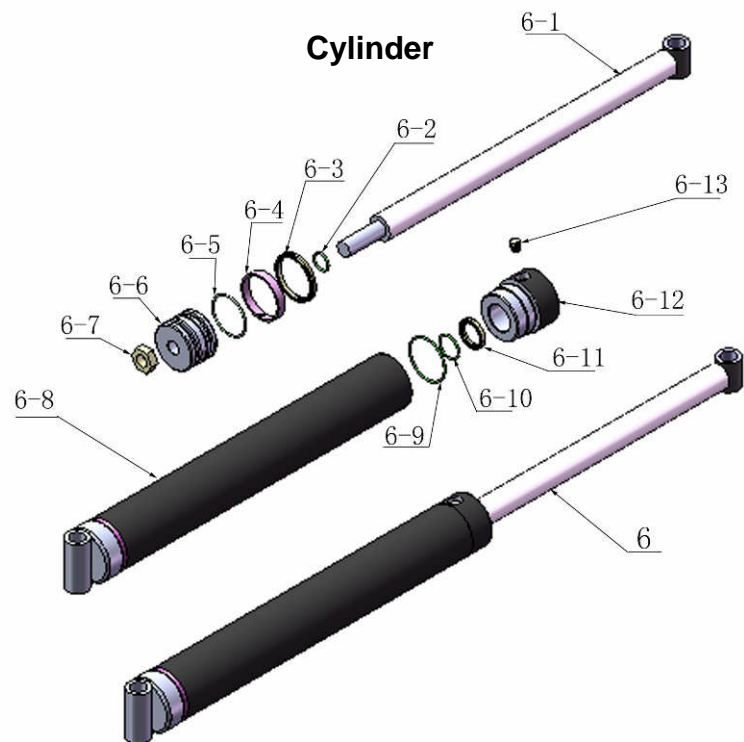
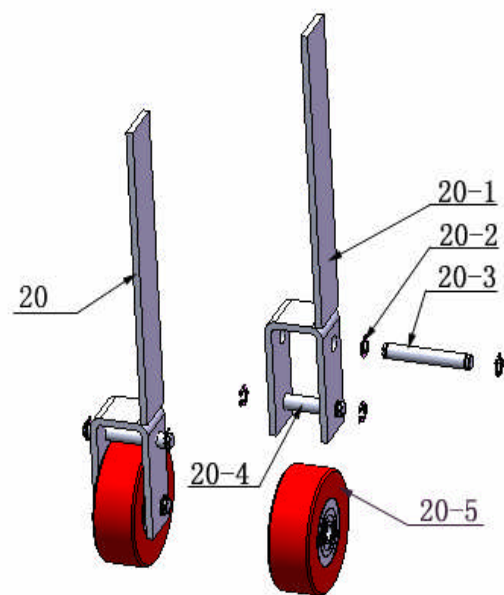


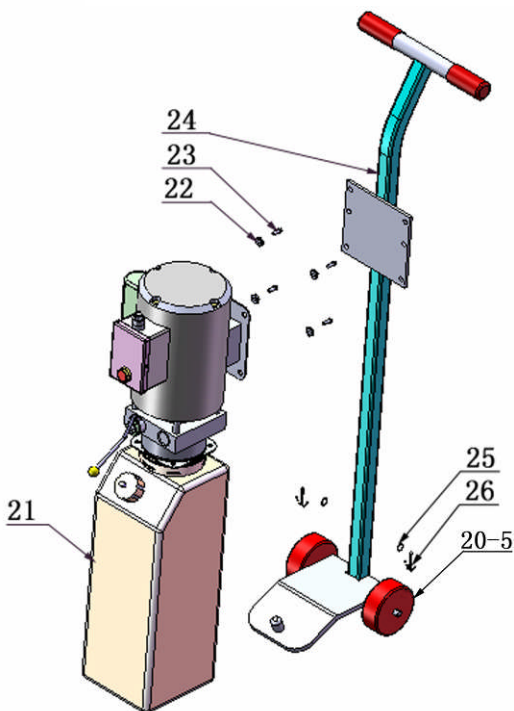
Fig. 8

**Roller Assy.**



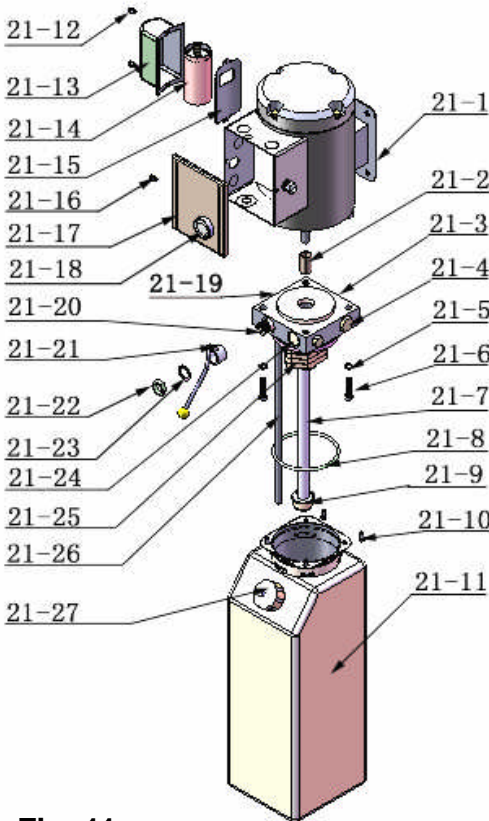
**Fig. 9**

**Power Unit Stand**



**Fig. 10**

**Hydraulic power unit**



**Fig. 11**



#### IV. PARTS LIST (See Fig. 7 & 10)

Item	Part No.	Description	QTY.	Note
1	630001	Platform	1	
2	630002	Snap Ring	2	
3	630003	Pin For Drive-thru Ramp	20	
4	630004	Drive-thru Ramp	2	
5	630005	Connecting Shaft For Cylinder	1	
6	630006	Hydraulic Cylinder	1	
7	630007	Pin For Cylinder Base	1	
8	520014	Pin	4	
9	630008	Pin for Connecting Plate Assy.	4	
10	630009	Connecting Plate Assy.	2	
11	630010	Pin for Connecting Plate Assy.	4	
12	630011	Connecting Plate Assy.	2	
13	630012	Base	1	
14	630013	Safety Lock	1	
15	630014	Safety Bar	1	
16	420020	Hex Bolts	2	
17	630015	Spring	2	
18	209022	Washer	4	
19	209056	Nylok Nut	2	
19A	620034	Rubber Pad	4	
20	640024	Roller Assy.	2	
21	209002	Power Unit	1	
22	209005	Nylok Nut	4	
23	209003	Hex Bolts	4	
24	640021	Power Unit Stand	1	
25	206006	Washer	2	
26	420046	Split Pin	2	
<b>Hydraulic Cylinder (See Fig. 8)</b>				
6-1	630026	Piston Rod	1	
6-2	620050	O-Ring	1	
6-3	630027	O-Ring	1	
6-4	620055	Support Ring	1	
6-5	620054	Y-Ring	1	
6-6	630028	Piston	1	
6-7	206071	Nut	1	
6-8	630029	Bore Weldment	1	
6-9	620049	O-Ring	1	
6-10	201035	O-Ring	1	
6-11	209078	Dust Ring	1	
6-12	630030	Head Cap	1	
6-13	201034	Bleeding Plug	1	

Item	Part No.	Description	QTY.	Note
<b>Roller Assy. (See Fig. 9)</b>				
20-1	630031	Rollers Bracket	2	
20-2	630032	Snap Ring	8	
20-3	630033	Connecting Shaft	2	
20-4	630034	Roller Shaft	2	
20-5	640023	Roller	4	
<b>Hydraulic Power Unit ( See Fig. 11 )</b>				
21-1	209082	Motor	1	
21-2	209083	Motor Connecting Shaft	1	
21-3	209084	Valve Body	1	
21-4	209085	Relief Valve	1	
21-5	209086	Spring Washer	4	
21-6	209087	Socket Bolt	4	
21-7	209088	Inlet Pipe	1	
21-8	209089	O-Ring	1	
21-9	209090	Filter	1	
21-10	209091	Hex Bolt	4	
21-11	209092	Reservoir	1	
21-12	209093	Bolt	2	
21-13	209094	Cover of Capacitor	1	
21-14	209095	Capacitor	1	
21-15	209096	Rubber Gasket	1	
21-16	209097	Hex Bolt	1	
21-17	209098	Cover of Motor Terminal Box	1	
21-18	209099	<b>Up</b> Button	1	
21-19	209100	Oil Outlet	1	
21-20	209101	Release Valve	1	
21-21	209102	Handle For Release Valve	1	
21-22	209103	Washer	1	
21-23	209104	Hex Nut	1	
21-24	209105	Check Valve	1	
21-25	209106	Gear Pump	1	
21-26	209107	Oil Return Pipe	1	
21-27	209108	Filler Cap	1	

